

PROSSER

ECONOMIC DEVELOPMENT ASSOC.
THE DIRECTION YOU'LL WANT TO GROW

2012

Annual Report

Working to... promote and advance the economic welfare and development of the City of Prosser and the surrounding area, thereby improving the quality of life and contributing to the overall economic development of the State of Washington.

Water Tower



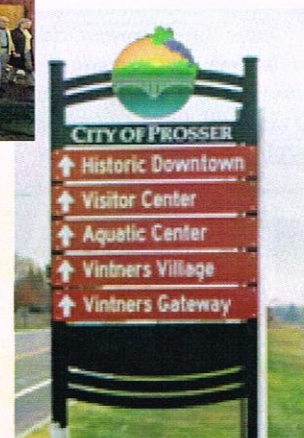
Four Feathers



Walter Clore Wine & Culinary Center



Legislative Tour of the Fish Hatchery



Directional Signage



Executive Director's Message

Our 2012 Board of Directors generously give a minimum of 25 hours per person per year to serve the Prosser community. This organization is able to create jobs, initiate solutions and move projects toward completion because of board, private, and public support. **Thank you!**

Demographics of Prosser have changed since the 2000 census. The "average Prosserite" is:

- Between the ages of 30 to 54
- More likely to be female
- Making \$41,733 a year
- A high school graduate with perhaps some college
- Working in public administration

Things to brag about . . .

- 16% increase in job earning of \$3,333 per month and above
- Vibrant and thriving health care community, leading the future in economic growth
- 4% above state average in producing high school graduates
- 3.2% population growth from July 2010 to July 2011; historically, growth has been 2%

Things to worry about . . .

- 6.4% reduction in employment between the ages of 29 – 54. The reduction of employment in this age group may mean a couple of things: 1) less employment opportunities 2) dropped out of work force and not looking for work
- 6.4% increase in employment over the age of 55. This may mean older citizens have to work longer before retiring
- Trend shows a decreasing number of workers with bachelor degrees or higher
- Prosser and Benton City have the lowest household incomes in the county; followed closely by Kennewick

Pending economic influences, our local economy should see a slow progression of growth in the next 36 to 48 months.

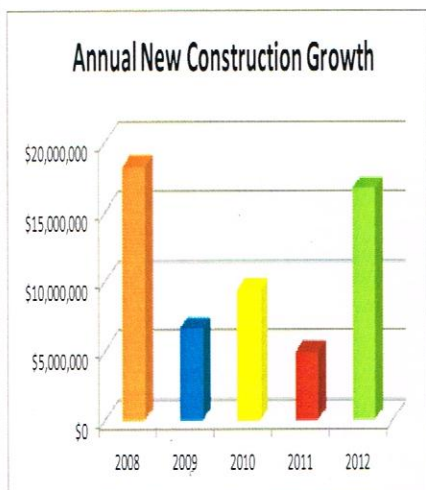
OUTLOOK:

- Employment to stabilize in 2013
- Population growth will have an effect on local economic growth
- Industries that will be leading growth: Healthcare, Educational Services, and Food Manufacturing

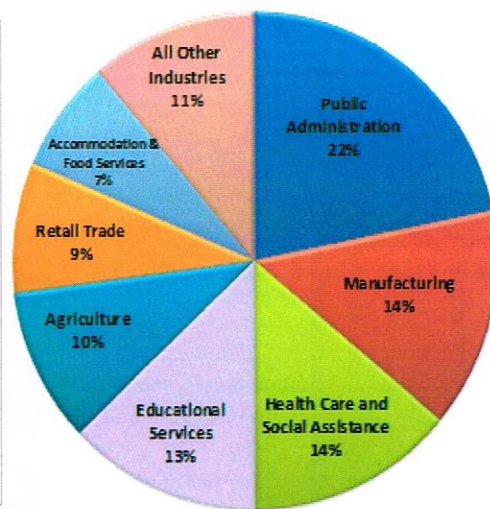
Let's keep our economy growing! Thank you for supporting Prosser EDA!

Growth in Prosser

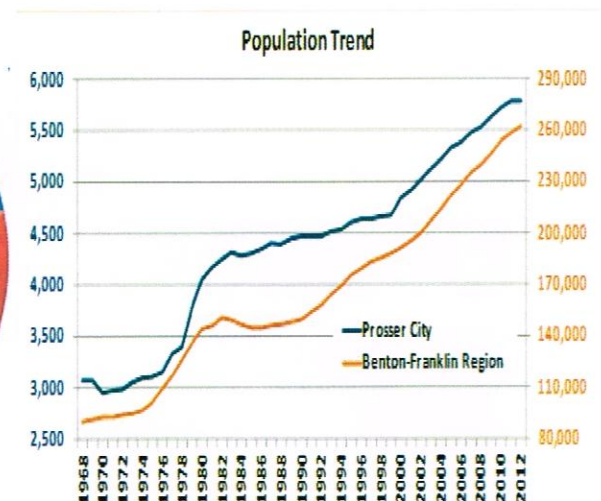
City has seen a considerable jump in new construction costs; 16.7 million in 2012. Zirkle Fruit has built Four Feathers Winery, opening their doors just as the 2012 harvest began. Snoqualmie, a brand of Ste. Michelle, expanded their bulk storage space. Expect a major renovation of their tasting room in 2013. A health care hub has been established on Chardonnay Blvd. as a collaborative effort of PMH Medical Center, Kadlec and Walla Walla Adventist Health providing a physician's clinic to serve Prosser and the surrounding region. The existing physical therapy and dental care facilities helped lure additional health care amenities to the area.



Source: City of Prosser, Prosser EDA



Source: WA Employment Security Dep, U.S. Census LED OnTheMap 2012

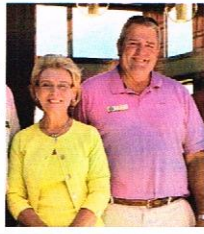


Source: WA Office of Financial Management 2012 Estimates, U.S. Census Bureau 2011 Estimates

2012 in Retrospect

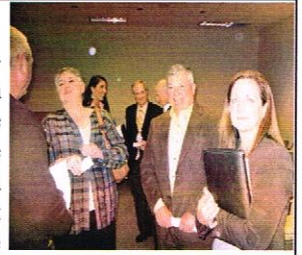
Governor Visits Prosser

Governor Gregoire was honored at a luncheon hosted at the Walter Clore Wine & Culinary Center on August 3rd. Presentations to the Governor and key dignitaries focused on the success of the Clore Center as it reaches the final design and construction phase of the 15,000 sq. ft. building.



Annual Meeting

The 2012 Annual Meeting was well attended and included two legislators from the 16th district and one legislator from the 8th district. A big THANK YOU to the Organization Committee for their work in presenting a PowerPoint to highlight Prosser EDA's accomplishments over the past several years and to educate about the 2012-2022 Strategic Plan.



Legislative Tour

A legislative tour and luncheon was held on May 14th at the Walter Clore Wine & Culinary Center Vineyard Pavilion. The event brought together 8th and 16th district legislators, showcasing the Center and its economic benefits to the state. On a separate occasion later in the summer, the 16th district legislators visited our community again with tours to the Yakama Nation Fish Hatchery and WSU-IAREC.



Walter Clore Wine & Culinary Center

Since its beginnings, the Clore Center concept has been reworked and many talented hands have touched it. Each person acknowledges the importance of developing the Center in a sustainable way. A number of strategies have been used to achieve this goal. It is because of the Port of Benton's significant involvement and commitment that has led the Clore Center to completion. 2012 was a busy year for the Center. ALSC Architects were selected and the design was finalized. Burke Construction of Spokane was awarded the construction bid. A timeline was established beginning with earth moving scheduled for early 2013 and building completion expected approximately 9 months later.



Senator Datty Murray Visits Prosser

Senator Murray and leaders of the Washington grape industry met on August 22 for a roundtable at the Walter Clore Wine and Culinary Center. Key topics discussed were labor shortages, immigration, infrastructure for future growth, the Clore Center, WSU's Wine Science Center, clean plant initiative and tourism. Grape industry leaders requested continued funding from the Economic Development Administration, Community Development Block Grants and Specialty Crop Block Grants as well as the need for research funding. Following the meeting, attendees toured Four Feather's crush facility in Prosser. Final, finishing touches allowed doors to open for the 2012 harvest. The tour demonstrated the continued growth of the grape industry and its importance to the state economy.



Directional Signage

The installation of six new directional signs along Wine Country Road from Exit 80 to Exit 82 provide visitors a helpful guide to locating destinations in Prosser. The signage system was designed by a local committee that relied on a cohesive theme, refreshed logo and updated colors for a vibrant look. Aaron O'Brien of Chinook Signs, Inc., assisted in design and construction. Funding for the \$20,000 project was made possible by the collaborative efforts of public in-kind support and private donations. "Prosser's non-profit organizations, i.e. Prosser Chamber, Tourism Committee, Historic Downtown Prosser and Prosser EDA, along with the help of the Port of Benton played a huge role in contributing to this project," stated Mayor Paul Warden.



Leadership Prosser's Inaugural Class

There is a new tradition in Prosser! Call it a citizen's academy for intensive learning. The charter class of 2012 graduated in August and is now serving as an advisory committee for the 2013 Leadership Prosser interns. The eight month class educates above living and working in Prosser, it's history, community infrastructure, and behind-the-scenes decision making. Class members met once a month for an in-depth exploration of critical Prosser topics: History and Culture, Government, Business & Industry, Agriculture, Education, Healthcare & Social Services, First Responders, Communication and Media. The 2012 Class project established a garden at the Boys & Girls Club. Congrats to Leadership Prosser!



One of the Best Communities for Young People

For a second consecutive year, Prosser was honored as one of the 100 Best Communities for Young People due to its commitment to providing a range of health services and after-school programs for youth. Prosser offers several programs which were recognized for their quality of care, including: Safe Babies Safe Moms, The Yakima Valley Farm Workers Clinic, 21st Century Community Learning Program, and the Prosser Boys & Girls Club.



Community Grant Writer Program

To date, this program has generated \$17.59 for every \$1 of investment into the program. Award totals in 2012 amounted to \$2,112,017. PMH Medical Center received \$1,490,017 and the Port of Benton was awarded \$622,000. 2012 pending awards total \$94,835.

Total amount of awards since the program's inception is \$6.8 million.

Planning assistance on the Clore operating budget, business plan and exhibits were shared by the funding partners of this program as well as writing two grant applications for the Clore Center. A huge thank you goes to Sue Jetter, the City of Prosser, PMH Medical Center and the Port of Benton for investing in this program to assist in spreading wealth throughout the community.

2012 Job Fair

There was a great turnout of employers at this event. In partnering with Columbia Basin WorkSource attendance was counted and logistics of the event were handled. Historic Downtown Prosser and Chamber of Commerce were offered booth spaces as well as other non-profit and volunteer based programs. This provides an element of education to participants regarding other community resources available.

Our Organization

2013 Board of Directors

OFFICERS

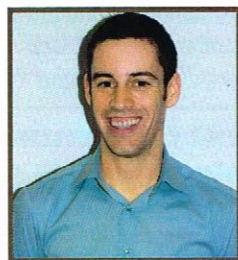
Jane Hagarty, **President**, Port of Benton Commissioner
 Dr. Robert Stevens, **Vice-President**, Director Emeritus, WSU IAREC
 Brian Newhouse, **Treasurer**, CPA, Sattler & Associates
 Shelley Clark, **Secretary**
 Max Benitz Jr., **Past-President**

BOARD MEMBERS

Jeff Andrews, Agriculture
 Troy Berglund, Benton REA
 Candice Bluechel, Skilled Labor
 Dr. Rich Cummins, Higher Education
 Jennifer Ely, Chamber of Commerce
 Scott Hamilton, Prosser City Council
 Bill Jenkin, Historic Downtown Prosser Association
 Tyson Jones, Food Processing
 Josh Mott, Tourism
 Dr. Michelle Moyer, WSU - IAREC
 Julie Petersen, PMH Healthcare
 Scott Pontin, Commercial
 Dick Poteet, Community
 Lisa Schmitt, Quality of Life
 Shon Small, Benton County
 Jenny Sparks, Benton PUD
 Dr. Ray Tolcacher, Prosser Schools
 Dianne Torres, Financial
 Mayor Paul Warden, City of Prosser
 Scott Wingert, Manufacturing

STAFF

Deb Heintz, Executive Director
 Amber Burnett, Office Manager



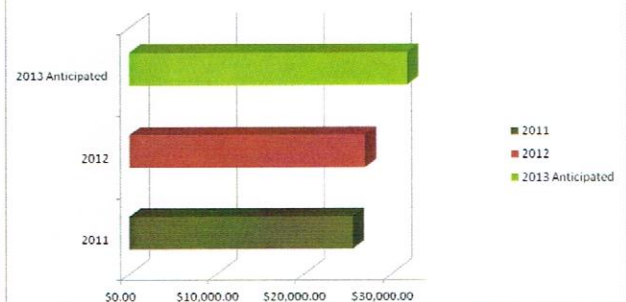
**Prosser EDA
 Contributor of the Year Award
 2012
 Brian Newhouse**

As the new owner of Sattler & Associates, Brian has served as Treasurer on Prosser EDA's Board of Directors for 2 years.
 Thank you for your outstanding support and contributions!

2012 MEMBERSHIP

Airfield Estates Winery
 AmericanWest Bank
 Après Vin
 Benton REA
 Benton PUD
 Ben Franklin Transit
 Bleyhl Farm Services
 Cascade Natural Gas
 Chardonnay Square
 ConAgra/Lamb Weston
 Conover Insurance
 Edward Jones Prosser
 Gap Road Properties LLC
 Heavens Cave Cellars
 Historic Downtown Prosser Association
 Huibregtse, Louman Associates
 Kenyon Zero Storage
 Lower Valley Credit Union
 Milne Fruit Products
 Northwest Farm Credit
 PMH Medical Center
 Prosser Chamber of Commerce
 R.E. Powell Distributing
 R.S. Poteet Insurance Agency, Inc.
 Sattler & Associates
 Ste. Michelle Wine Estates
 Tom Denchel Ford
 Tomlinson Wine Country Real Estate
 TreeTop, Inc.
 WA Assoc. of Wine Grape Growers
 Yakima Federal Savings
 Zirkle Fruit Company

Annual Membership Income



Funding Partners

**City of Prosser * Port of Benton *
 Benton County * Private Sector**

Through partnerships with public entities and private businesses, Prosser EDA creates and promotes a sustainable community by leading projects to create economic growth for our citizens. Our initiatives add value to Prosser by improving the quality of life, stimulating a diverse economy, preserving environmental assets, and forging key alliances which result in measurable increases in vital economic indicators of a healthy, growing community.