

Progress In Motion

- Edition V 2006

In This Issue

TRIDEC SmartMap Expo
Economic Development
"Good Times"
Business Resources at
Pacific NW National Labs
2006 Award of Excellence
Do You Need
Employees?
Prosser Produces Big
Time

Sign Up

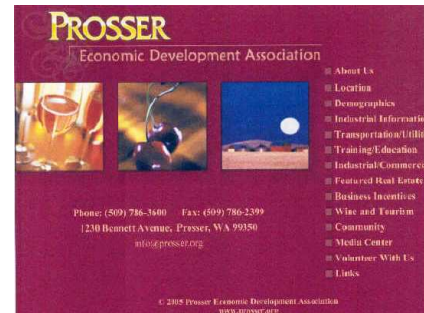
SIGN-UP!

Funding Partner Links

Port of Benton
City of Prosser
Benton County

We're All About Business!

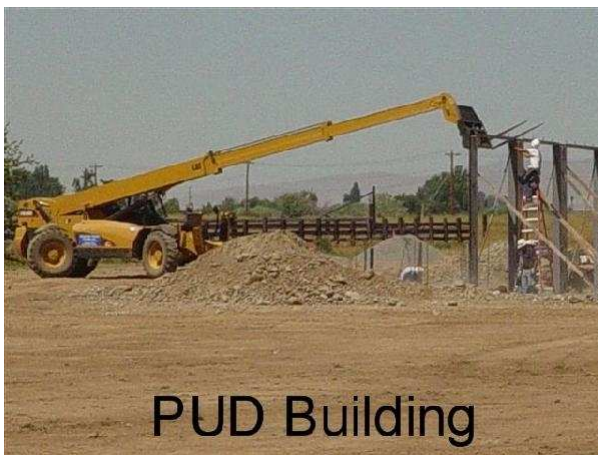
Our website offers links and helpful information on business resources. Click on the Homepage Icon and visit our Business Incentives page today!



TRIDEC SmartMap Expo

The fourth annual TRIDEC SmartMap Expo is September 28, 2006 at the Three Rivers Convention Center in Kennewick. The Manufacturers Exposition and Success Seminars (Export Success and Manufacturing Success) are free and open to the public. Advance registration is required. This is a great opportunity to Network, Learn and Showcase your products. For more information visit [TRIDEC](#)

Economic Development "Good Times"



PUD Building

The community of Prosser is under construction. Groundbreakings seem to be an every day occurrence. Seven projects have begun in 2006, from the ground up. They include: Olsen Bros. Estate Winery, Winemaker's Loft, a new Benton PUD facility, Connell Oil Cardlock, FruitSmart, Desert Valley Power Sports and Wine Country Square.



Winemakers Loft

Two other projects, Thompson Aircrafts' new building dedication at the Prosser Airport, takes place on August 21 at 11:00 a.m. and Airfield Estates Winery groundbreaking is August 22nd, at the North Prosser Business Park at 11:00 a.m.

Major remodels on existing buildings are also taking place. Auto Zone renovated a Prosser building, formerly a grocery store, and now is open for business. The Princess Theatre will be getting a face lift this year, hoping to open by December. And, the upstairs lofts of the 1906 Mercer Building, located in the downtown core, are being renovated; already housing the Walter Clore Wine & Culinary Center office.

The City of Prosser has estimated close to \$20 million in project development for 2006 compared with \$8 million last year. By the look of things, they will be correct in their projections. There are extended economic advantages that will benefit the community, such as the conservatively estimated 50 jobs created. Retail sales tax from these businesses selling their products will also bolster revenues. A number of these companies are tourism based which will increase overnight stays, visits to restaurants and shopping establishments. Prosser is obviously "The Direction You'll Want To Grow!"

Business Resources at Pacific NW National Labs

Two new resources are online now: 1) A presentation by Louise Neal, "Finding Funding to Help Your Company Grow," is at http://www.pnnl.gov/edo/events/finding_money.stm. Neal, Chair of the Columbia Investor Group, spoke at the Three Rivers Entrepreneur Network meeting in Richland in July.

2) A new article, "Ten Tips for a Successful Business," is online at <http://www.pnnl.gov/edo/tips/>. [Visit PNNL](#). The Business Incentive page on our website contains links to a variety of other resources on the PNNL site.

More info . . . Prosser EDA Business Incentives Page

2006 Award of Excellence

Prosser was presented with the 2006 Award of Excellence from the WA State Department of Transportation and the Federal Highway Administration for the best city project, its' Wine Country Road project. The 15.7 million project added 3 vehicle lanes, an additional Yakima River Bridge, two new traffic signals and a reconstructed railroad overpass. Curbs, sidewalks and lighting were also added along the road. The construction provided much needed relief from traffic congestion along the 3 1/2 mile stretch, as well as pedestrian and bicycle improvements. [WSDOT article . . .](#)



Do You Need Employees?

Businesses can get partial reimbursement for wages paid when they hire Columbia Basin College students through the State Work Study program during the 2006-2007 school year. CBC places students in jobs that relate to their majors and reimburses an employer up to 55% of their hourly wages, up to 19 hours a week. Organizations providing community services get reimbursed at 80%. An employer must complete a contract packet and can hire students at various time periods for the upcoming fall, winter and spring quarters beginning September 18, 2006. Contact Linda Forrest at 509 547-0511 ext. 2437 or email forrest@columbasin.edu.

Prosser Produces Big Time

Large Scale Winery Production: The twenty five largest wineries in Washington State (by case production) produced 4,912,976 cases of wine in 2005; four of these large scale wineries are located in Prosser EDA's economic development area. These Prosser area wineries, Columbia Crest Winery, Hogue Cellars, Snoqualmie Vineyards and Kestrel Vintners produced 2,318,800 cases of wine, accounting for 47% of the 2005 large scale winery production. Prosser's burgeoning wine industry and the related agri-support services play an integral role in our economic base.

**Facts based on the Puget Sound Business Journal Survey, published in supplement "Business of Washington Wine" 6/2006.*



Prosser Economic Development Association

email: economicdevelopment@prosser.org

Phone: 509 786-3600

web: <http://www.prosser.org>

[Forward email](#)

SafeUnsubscribe™

This email was sent to economicdevelopment@prosser.org, by

economicdevelopment@prosser.org

[Update Profile/Email Address](#) | Instant removal with [SafeUnsubscribe™](#) | [Privacy Policy](#).

Powered by



Prosser Economic Development Association | 1230 Bennett Avenue | Prosser | WA | 99350